

## FUEL INJECTOR REMOVAL/INSTALLATION[L3 Turbo]

id0114b4800600

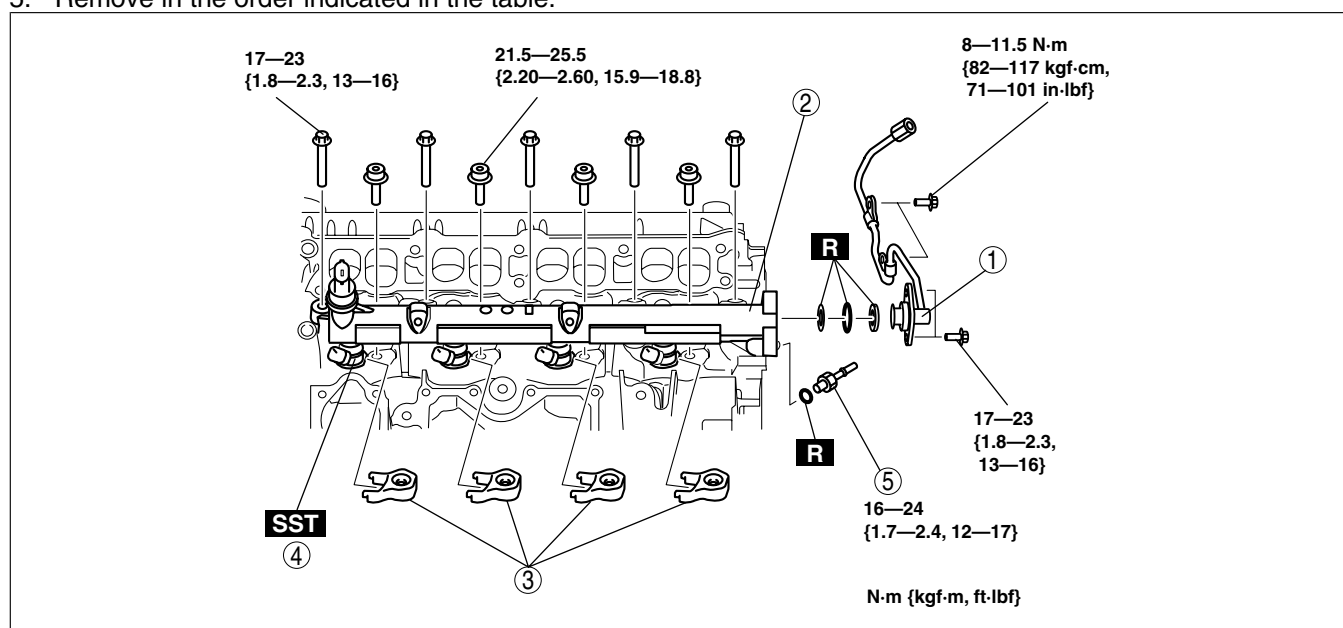
### Caution

- Disconnecting/connecting the quick release connector without cleaning it may cause damage to the fuel pipe and quick release connector. Always clean the quick release connector joint area before disconnecting/connecting using a cloth or soft brush, and make sure that it is free of foreign material.

### Note

- When the fuel pressure sensor replaces, replace a new fuel delivery pipe with a new fuel pressure sensor. (See FUEL INJECTOR REMOVAL/INSTALLATION[L3 Turbo])

1. Complete the "BEFORE SERVICE PRECAUTION". (See BEFORE SERVICE PRECAUTION[L3 Turbo].)
2. Remove the battery cover. (See BATTERY REMOVAL/INSTALLATION[L3 Turbo].)
3. Disconnect the negative battery cable.
4. Remove the intake manifold. (See INTAKE AIR SYSTEM REMOVAL/INSTALLATION[L3 Turbo].)
5. Remove in the order indicated in the table.



acxuuw00000267

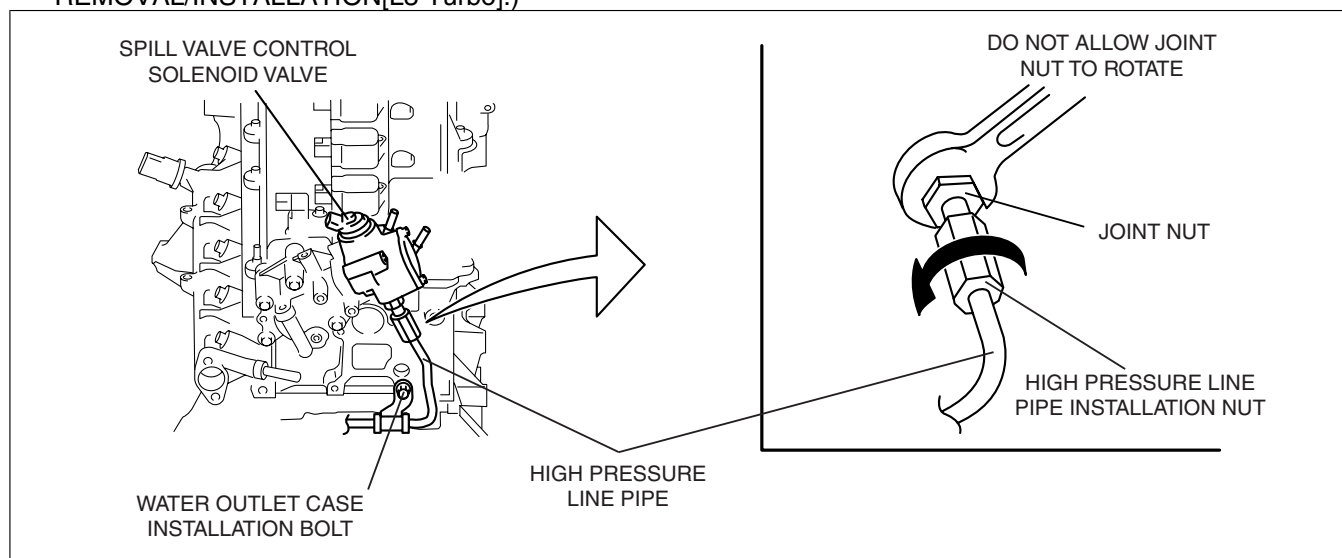
1	High pressure line pipe (See High Pressure Line Pipe Removal Note .) (See High Pressure Line Pipe Installation Note .)
2	Fuel delivery pipe (See Fuel Delivery Pipe Installation Note .)
3	Fuel injector bracket
4	Fuel injector (See Fuel Injector Removal Note .)
5	Relief valve

6. Install in the reverse order of removal.
7. Inspect all parts by performing "AFTER SERVICE PRECAUTION". (See AFTER SERVICE PRECAUTION[L3 Turbo].)

### High Pressure Line Pipe Removal Note

1. Drain engine coolant. (See ENGINE COOLANT REPLACEMENT[L3 Turbo].)

2. Disconnect the high pressure line pipe of the high pressure fuel pump. (See HIGH PRESSURE FUEL PUMP REMOVAL/INSTALLATION[L3 Turbo].)



acxuuv00000268

- (1) Fix the joint nut with a wrench on the high pressure fuel pump side as shown in the figure.
- (2) Loosen the high pressure line pipe installation nut.
3. Remove the high pressure line pipe.

## Fuel Injector Removal Note

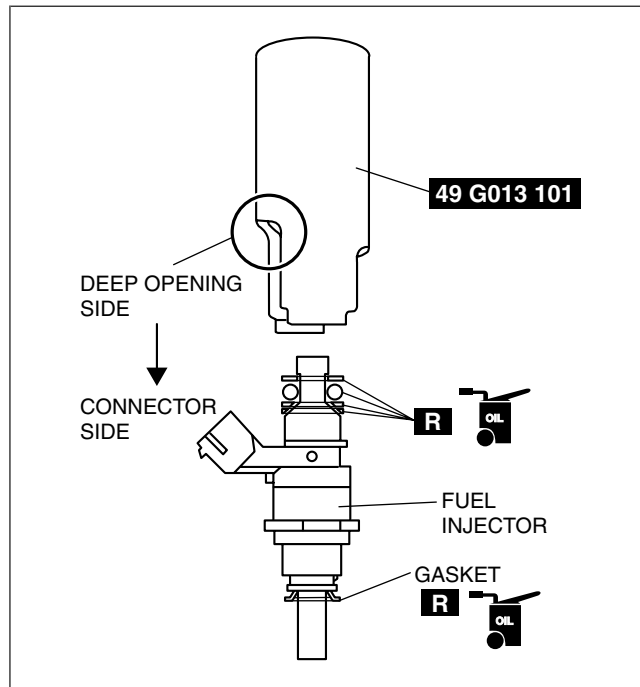
### Note

- Depending on the driving conditions, carbon may accumulate on the inserted part of the fuel injector, causing the fuel injector to stick. Remove the fuel injector using the following procedure.

1. Install the **SST** to the fuel injector confirming that the **SST** faces the correct direction as shown in the figure.

### Caution

- If the **SST** slips while ratcheting up the fuel injector, the fuel injector or surrounding parts could be damaged. Press fit the **SST** to the fuel injector firmly and operate carefully.
- When ratcheting up the fuel injector, the fuel injector connector may contact the cylinder head and damage the fuel injector. Ratchet up the fuel injector so that the fuel injector connector does not contact the cylinder head.



acxuuw00000269

### Note

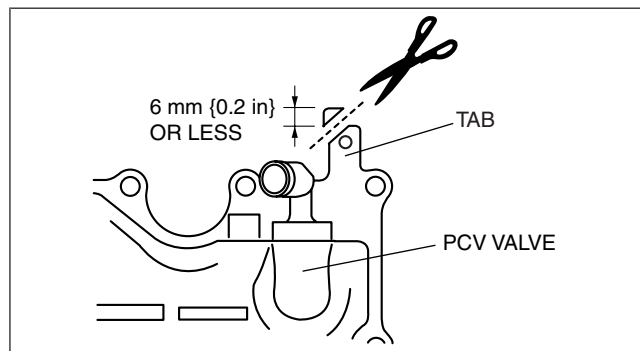
- If fuel injector No.3 contacts the oil separator, cut the tab on the oil separator as shown in the figure. Carefully cut the tab so that the oil separator is not deformed or damaged, with no clearance on the mating surfaces of the oil separator and engine.

2. Keep ratcheting the **SST** so that the fuel injector becomes free enough to ratchet up without using the **SST**.

### Caution

- Do not apply excessive force to the fuel injector connector because the fuel injector could be damaged.

3. Pull out the fuel injector by ratcheting it upright.
4. Verify that there are no gasket in the cylinder heads after removing the fuel injectors.



acxuuw00000270

### Warning

- If foreign material such as metal shavings penetrates the fuel injector installation hole on the cylinder block, the engine could be damaged. Remove all foreign material and cap the fuel injector installation hole after removing the fuel injector.

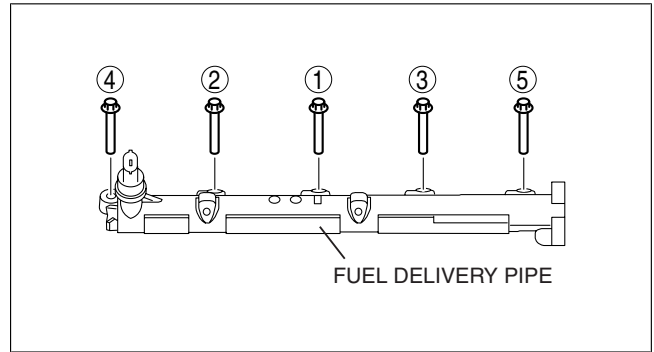
5. Clean the fuel injector and around the insertion hole using a vacuum cleaner.

## Fuel Delivery Pipe Installation Note

1. Tighten the bolts in the order shown in the figure.

### Tightening torque

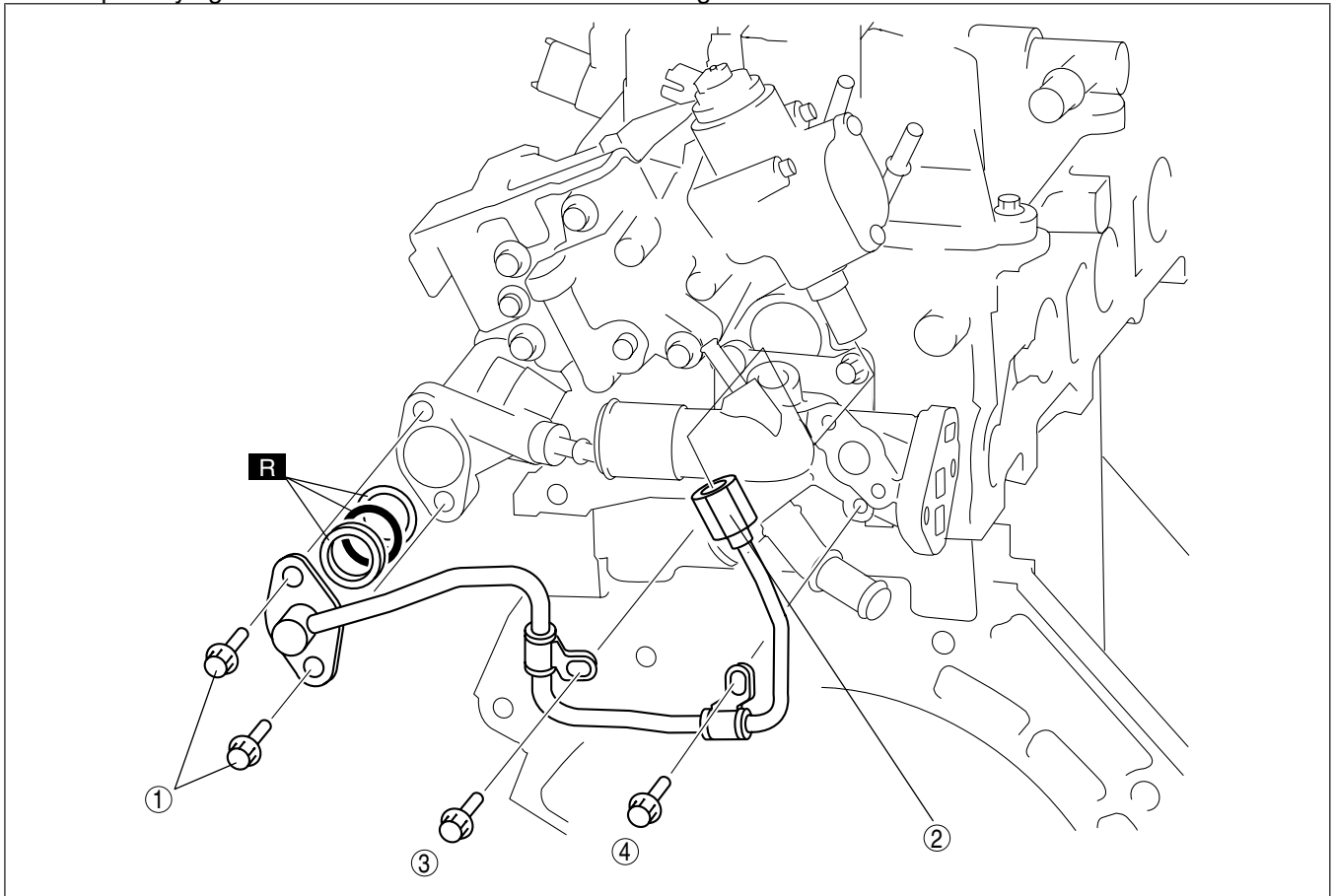
17—23 N·m {1.8—2.3 kgf·m, 13—16 ft·lbf}



acxuuw00000271

### High Pressure Line Pipe Installation Note

1. Temporarily tighten the bolts in the order shown in the figure.



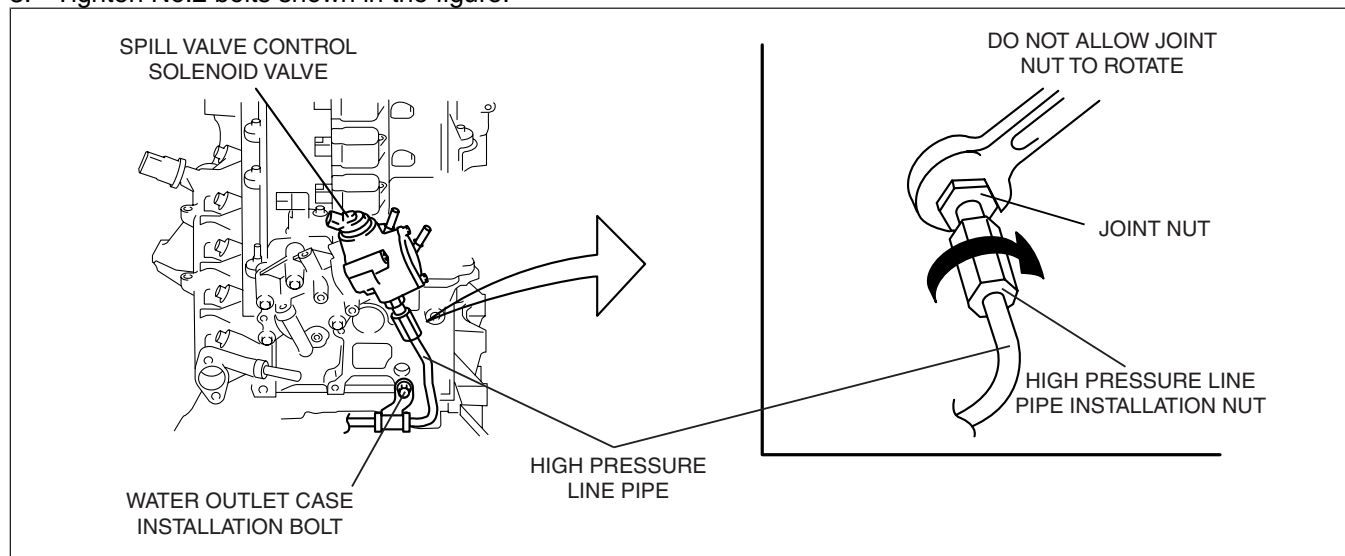
acxuuw00000272

2. Tighten No.1 bolts shown in the figure.

### Tightening torque

17—23 N·m {1.8—2.3 kgf·m, 13—16 ft·lbf}

3. Tighten No.2 bolts shown in the figure.



acxuuw00000273

- (1) Fix the joint nut with a wrench on the high pressure fuel pump side as shown in the figure.
- (2) Tighten the high pressure line pipe installation nut.

**Tightening torque**

**23.5—35.5 N·m {2.40—3.61 kgf·m, 17.4—26.1 ft·lbf}**

4. Tighten No.3, No.4 bolts shown in the figure.

**Tightening torque**

**17—23 N·m {1.8—2.3 kgf·m, 13—16 ft·lbf}**