

## GENERATOR REMOVAL/INSTALLATION[L3 Turbo]

id0117b2800200

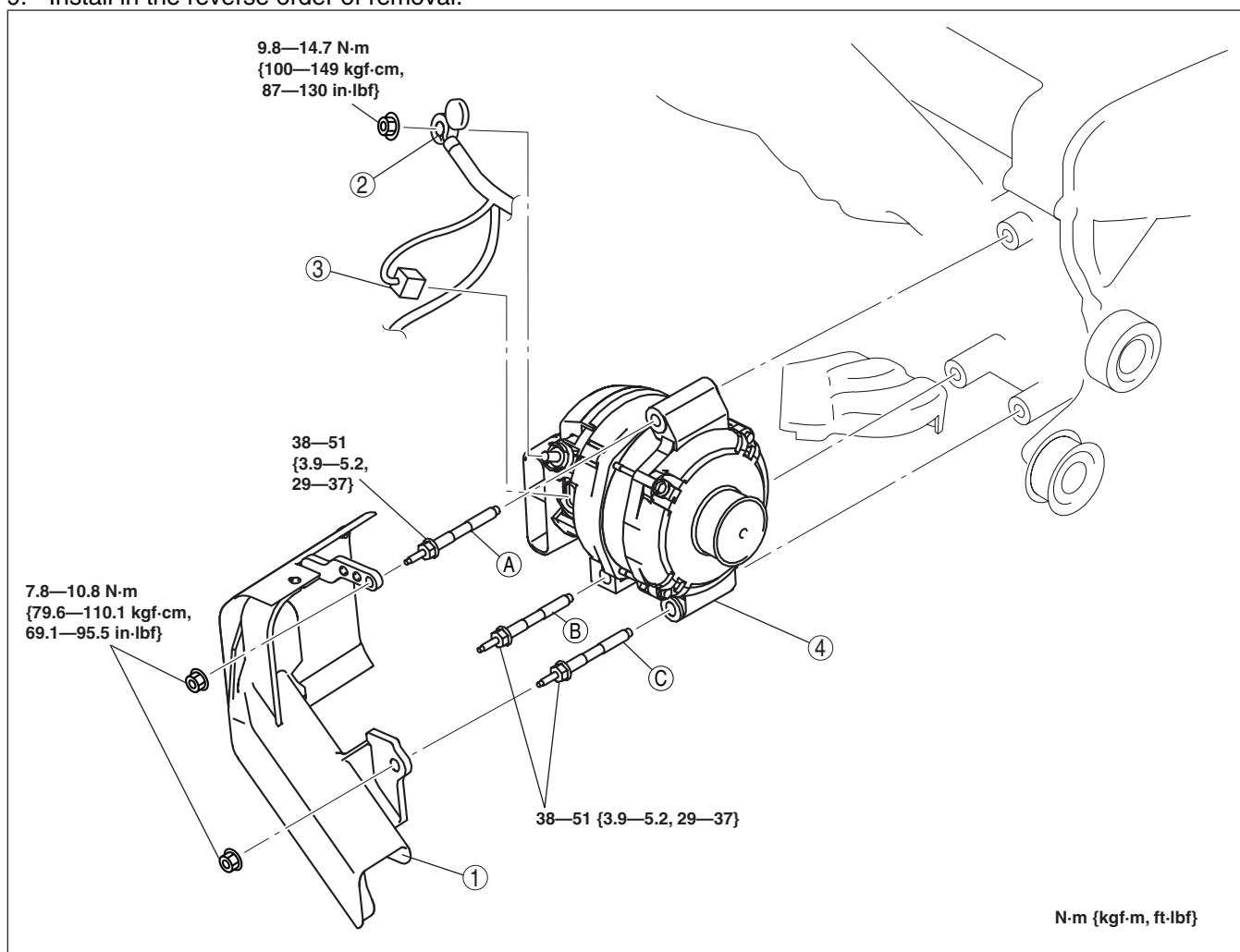
### Warning

- Remove and install all parts when the engine is cold, otherwise they can cause severe burns or serious injury.
- When the battery cables are connected, touching the vehicle body with generator terminal B will generate sparks. This can cause personal injury, fire, and damage to the electrical components. Always disconnect the negative battery cable before performing the following operation.

### Caution

- The generator can be damaged by the heat from the exhaust manifold. Make sure the generator duct is installed securely.

1. Remove the battery cover. (See BATTERY REMOVAL/INSTALLATION[L3 Turbo].)
2. Disconnect the negative battery cable.
3. Remove the charge air cooler and charge air cooler bracket. (See INTAKE AIR SYSTEM REMOVAL/INSTALLATION[L3 Turbo].)
4. Remove the insulator (body side) and exhaust manifold insulator (upper) (L.H.D.). (See EXHAUST SYSTEM REMOVAL/INSTALLATION[L3 Turbo].)
5. Remove the under cover and splash shield as a single unit.
6. Remove the drive belt. (See DRIVE BELT REMOVAL/INSTALLATION[L3 Turbo].)
7. Remove the WU-TWC (R.H.D.). (See EXHAUST SYSTEM REMOVAL/INSTALLATION[L3 Turbo].)
8. Remove in the order indicated in the table.
9. Install in the reverse order of removal.



am3uuw00000306

1	Generator duct (See Generator Duct Removal Note .)
2	Terminal B cable
3	Generator connector

4

**Generator**

(See Generator Removal Note (L.H.D.) .)

(See Generator Removal Note (R.H.D.) .)

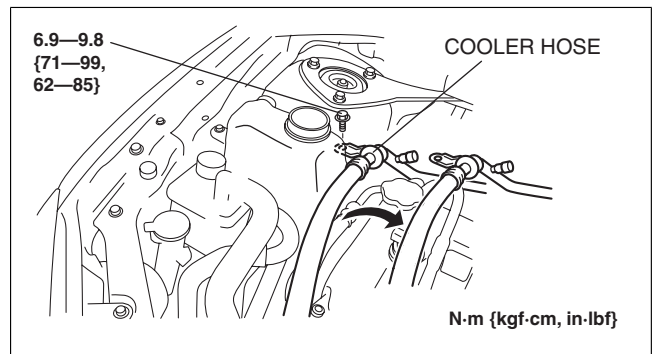
(See Generator Installation Note .)

**Generator Duct Removal Note**

1. Remove the generator duct fitting nuts, and position it in the engine compartment in a location where no part can be damaged.

**Generator Removal Note (L.H.D.)**

1. Remove the cooler hose bracket bolt and set the cooler hose out of the way before performing the generator removal/installation.
2. Remove the generator from above the engine compartment.



am3uuw00000307

**Generator Removal Note (R.H.D.)**

1. Remove the generator from below the engine compartment.

**Generator Installation Note**

1. Tighten bolt A temporarily.
2. Tighten bolt B, C to the specified tightening torque.
3. Tighten bolt A to the specified tightening torque.