

## FLYWHEEL INSPECTION [J65M-R, A26M-R]

id0510008001b6

### Caution

- Do not rework the dual-mass flywheel if it is distorted.
- Do not clean the dual-mass flywheel with any kind of fluid. Clean the dual-mass flywheel with a dry cloth only.
- Do not clean the gap between the primary and secondary mass. Only clean the bolt connection surface and the clutch surface.

1. Remove the dual-mass flywheel.

### Note

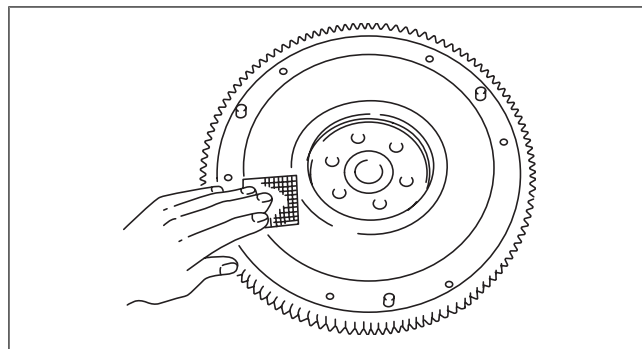
- Correct slight scratches and discoloration using sandpaper.
- Inspect the runout of the surface that contacts the clutch disc with the dual-mass flywheel installed to the crankshaft.

2. Inspect the dual-mass flywheel.

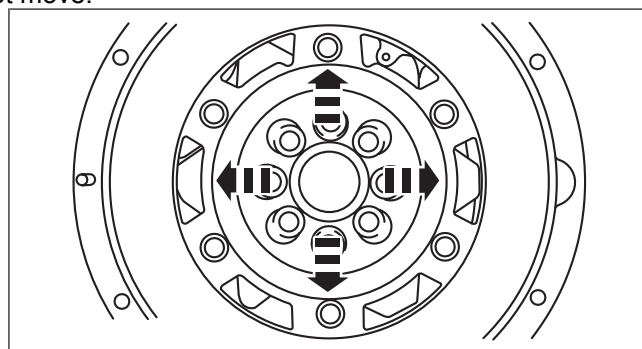
- Cracks
- Worn ring gear teeth
- Chipped or cracked ring gear teeth
- Surface that contacts the clutch disc for scratches, nicks, and discoloration.
- If there is any malfunction, replace the dual-mass flywheel.

3. Verify that the center of the dual-mass flywheel does not move.

- (1) Rotate the dual-mass flywheel or attempt to move it up and down, and left and right to verify that the center of the dual-mass flywheel does not move.
  - If there is any movement as indicated by the arrows in the figure, replace the dual-mass flywheel with a new one.



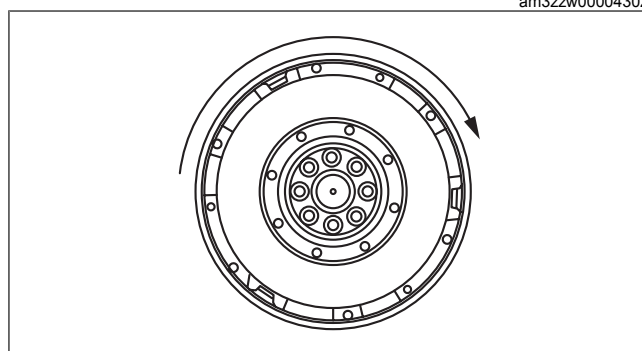
am3zzw00004301



am3zzw00004302

4. Verify that the secondary mass rotates by 15 teeth or more.

- If it rotates by 15 teeth or more, replace the dual-mass flywheel.



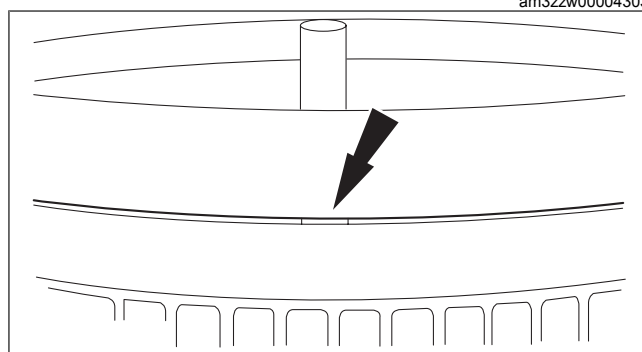
am3zzw00004303

5. Inspect for locating dowels touching the primary mass of the dual-mass flywheel.

### Caution

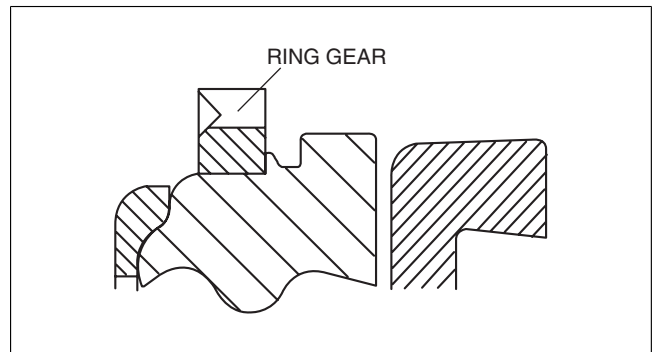
- Make sure that the three locating dowels are installed.
- If the locating dowels are touching the primary mass of the dual-mass flywheel, replace the dual-mass flywheel with a new one.

6. Visually inspect the secondary mass.



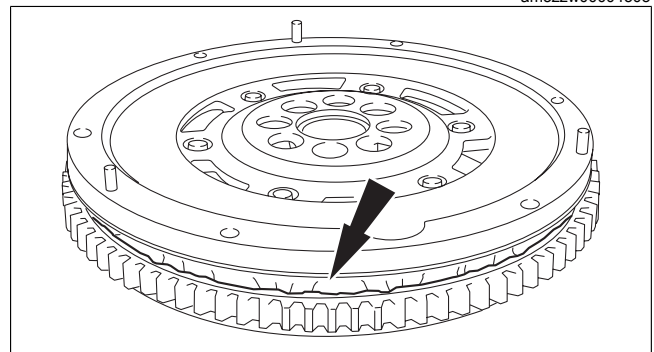
am3zzw00004304

- If there is any damage, replace the dual-mass flywheel.
7. Visually inspect the ring gear on the dual-mass flywheel.
- If there is any damage, replace the dual-mass flywheel.



am3zzw00004305

8. Inspect the welded area of the dual-mass flywheel for grease leakage.
- If there is grease leakage, replace the dual-mass flywheel.

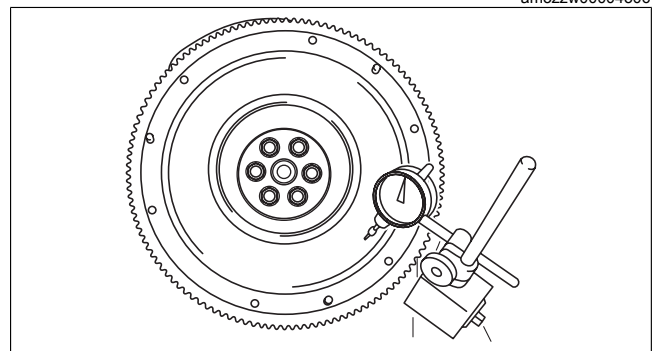


am3zzw00004306

9. Inspect the dual-mass flywheel runout.

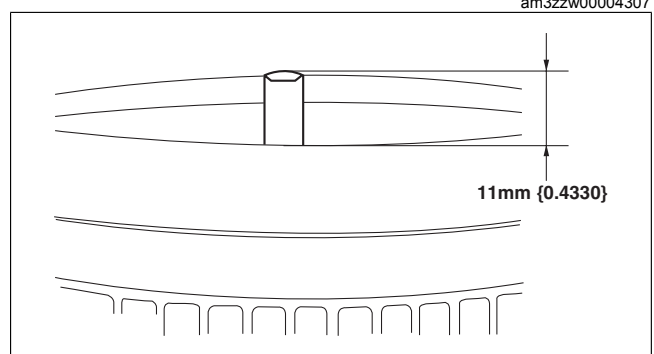
**Flywheel maximum runout [J65M-R, A26M-R]  
1.5 mm {0.059 in}**

- If it is more than the maximum specification, replace the dual-mass flywheel.



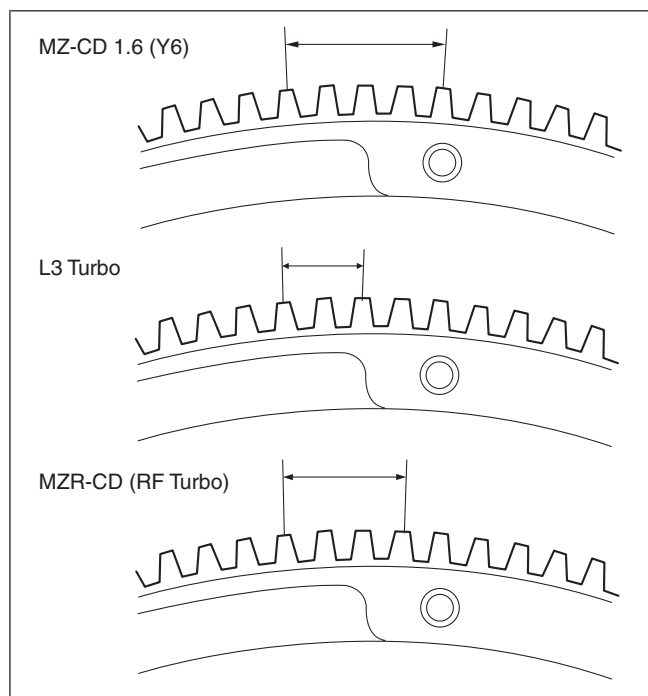
am3zzw00004307

10. Inspect the dual-mass flywheel for the amount of guide pin projection.
- If not within the specification, replace the dual-mass flywheel.



am3zzw00004308

11. Rotate the secondary mass left and right and verify that it rotates within a range of five teeth (MZ-CD 1.6 (Y6)) or three teeth (L3 Turbo) or four three (MAR-CD (RF Turbo)) without resistance.
  - If there is any malfunction, replace the dual-mass flywheel.
12. Inspect the dual-mass flywheel for cracks.
  - If there are cracks, replace the dual-mass flywheel.



am3zzw00004309