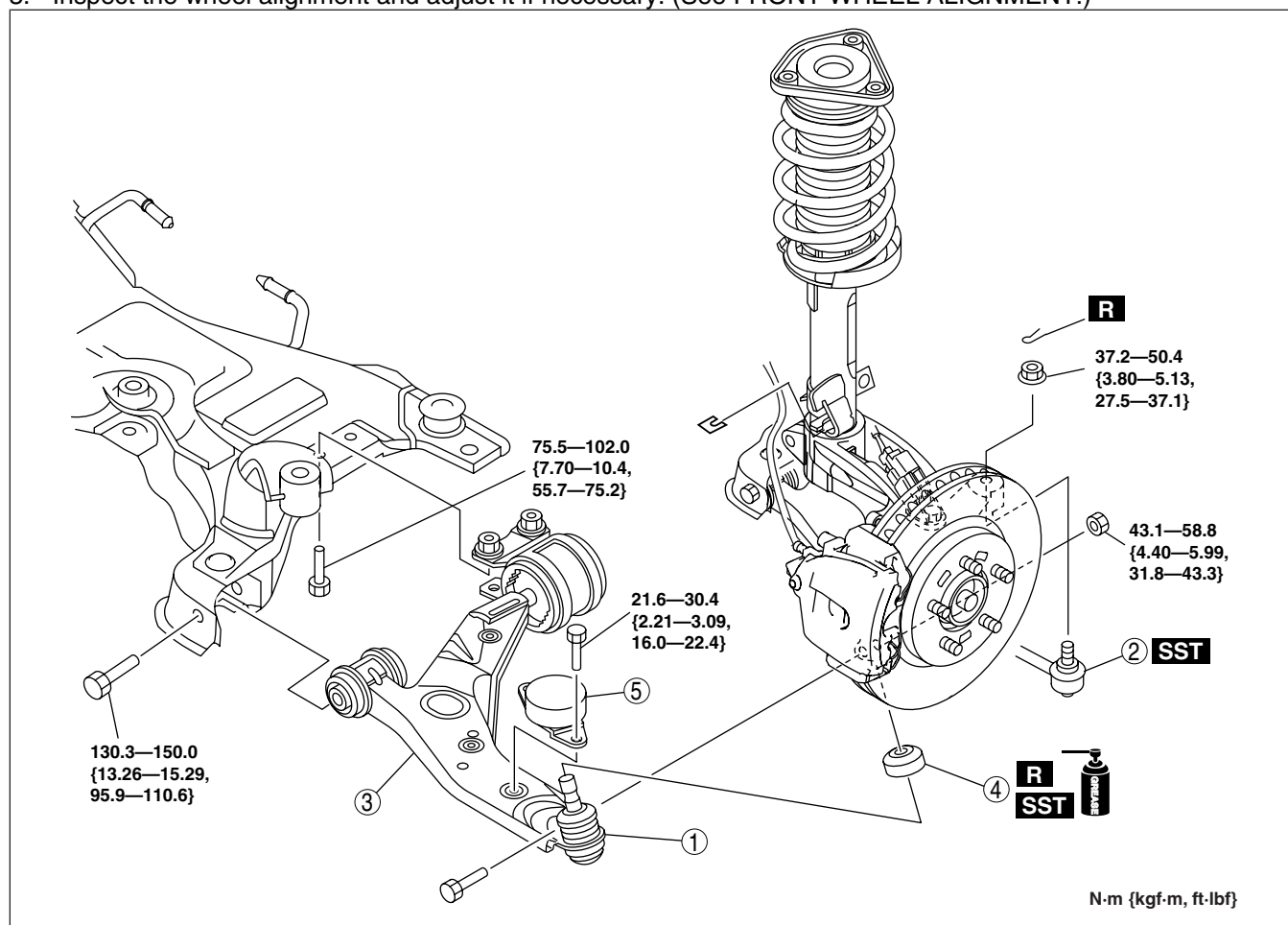


FRONT LOWER ARM REMOVAL/INSTALLATION

id021300800600

1. Remove in the order indicated in the table.
2. Install in the reverse order of removal.
3. Inspect the wheel alignment and adjust it if necessary. (See FRONT WHEEL ALIGNMENT.)



am3zzw00002816

1	Front lower arm ball joint
2	Tie-rod end ball joint (See FRONT CROSSMEMBER REMOVAL/ INSTALLATION.)
3	Front lower arm (See Front Lower Arm Removal Note .) (See Front Lower Arm Installation Note .)
4	Dust boot (See Dust Boot Installation Note .)
5	Dynamic damper

Front Lower Arm Removal Note

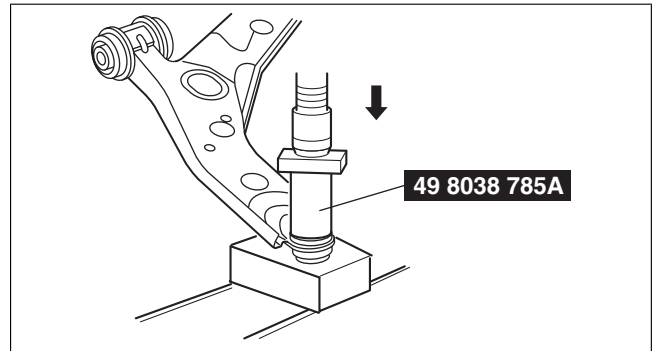
Note

- When working on the right side of LF engine vehicles, move the engine and transaxle slightly towards the front side of the vehicle so that the engine does not interfere with the removal of the lower arm front side bolt.

1. Remove the No.1 engine mount center bolt. (LF engine vehicles)
2. Move the engine and transaxle slightly towards the front side of the vehicle. (LF engine vehicles)
3. Remove the front lower arm rear side bolt.
4. Remove the front lower arm.

Dust Boot Installation Note

1. Wipe the grease off the ball stud.
2. Fill the inside of the new dust boot with grease.
3. Press the boot onto the ball joint using the **SST**.
4. Wipe away the excess grease.



am3zzw00002939

Front Lower Arm Installation Note

Caution

- Install the front lower arm according to the following procedures for optimal installation. Tighten the lower arm installation bolt properly when the vehicle is lifted.

1. Temporarily install the front lower arm.
2. Install the No.1 engine mount. (LF engine vehicles)

Tightening torque

93.1—116.6 N·m {9.50—11.88 kgf·m, 68.67—85.99 ft·lbf}

3. Tighten the front lower arm rear side bolt.
4. Tighten the front lower arm front side bolt.
5. Tighten the nut (front lower arm ball joint).