

## FUEL PUMP UNIT REMOVAL/INSTALLATION [L3 Turbo]

id0114b4800900

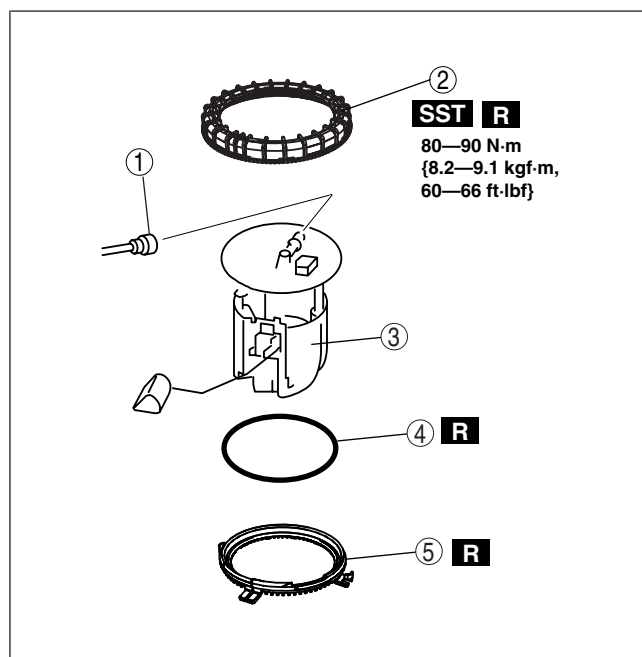
### Warning

- Fuel is very flammable liquid. If fuel spills or leaks from the pressurized fuel system, it will cause serious injury or death and facility breakage. Fuel can also irritate skin and eyes. To prevent this, always complete the “Fuel Line Safety Procedure”, while referring to “BEFORE SERVICE PRECAUTION”.
- Fuel is very flammable liquid. If fuel spills or leaks from the pressurized fuel system, it will cause serious injury or death and facility breakage. Fuel can also irritate skin and eyes. To prevent this, before performing the fuel pump unit removal/installation, always complete the “Fuel Leak Inspection After Fuel Pump Unit Installation”.

### Note

- Gasket must be replaced anytime fuel pump is removed or replaced.

1. Follow “BEFORE SERVICE PRECAUTION” before performing any work operations to prevent fuel from spilling from the fuel system. (See BEFORE SERVICE PRECAUTION [L3 Turbo].)
2. Remove the battery cover. (See BATTERY REMOVAL/INSTALLATION [L3 Turbo].)
3. Disconnect the negative battery cable.
4. Remove the fuel tank. (See FUEL TANK REMOVAL/INSTALLATION [L3 Turbo].)
5. Remove in the order indicated in the table.
6. Install in the reverse order of removal.
7. Inspect all related parts by performing “AFTER SERVICE PRECAUTION”. (See AFTER SERVICE PRECAUTION [L3 Turbo].)



am3zzw00003193

1	Quick release connector (See QUICK RELEASE CONNECTOR REMOVAL/INSTALLATION [L3 Turbo].)
2	Fuel pump cap (See Fuel Pump Cap Removal Note .) (See Fuel Pump Cap Installation Note .)

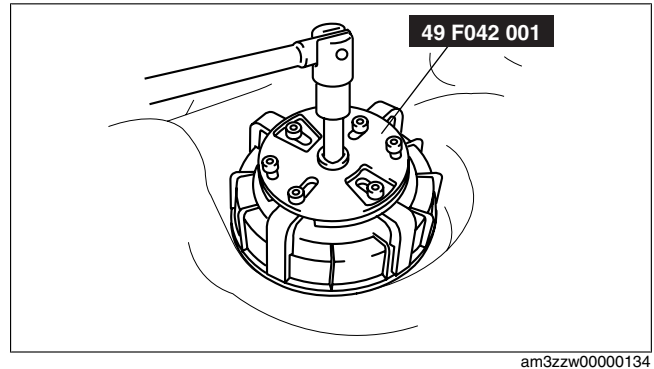
3	Fuel pump unit (See Fuel Pump Cap Removal Note .)
4	Packing (See Fuel Pump Cap Installation Note .)
5	Retainer (See Fuel Pump Cap Installation Note .)

### Fuel Pump Cap Removal Note

#### Caution

- The fuel pump cap could be damaged if the SST is used with any gap between the cap and the SST. Securely attach the SST so that there is no gap between the SST tabs and the side of the cap.

1. Remove the fuel pump cap using the **SST**.

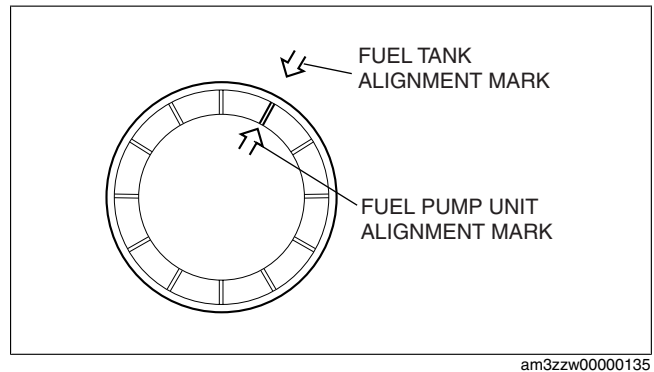


### Fuel Pump Cap Installation Note

#### Note

- The fuel pump unit will rotate and cannot be secured in the specified position if there is any gasoline on the gasket. Thoroughly wipe away all gasoline from the gasket.

1. Align the fuel tank and fuel pump unit alignment marks as shown in the figure.



2. Set the **SST** as shown in the figure.
3. Using the **SST**, tighten the fuel pump cap within the specified tightening torque without shifting the alignment marks.
  - If the specified tightening torque cannot be obtained, replace the fuel pump cap and gasket.
  - If the specified tightening torque cannot be obtained after replacement of the fuel pump cap and gasket, replace the fuel tank.

#### Fuel pump cap tightening torque

80—90 N·m {8.2—9.1 kgf·m, 59—66 ft·lbf}

